

SINDHI HIGH SCHOOL, HEBBAL
 SUMMATIVE ASSESSEMENT – II (2015-16)
 SUBJECT:- MATHEMATICS

CLASS:- IX
 DATE:-22.03.2016

MARKS:- 90
 TIME :- 3hr
 No. of sides:- 04

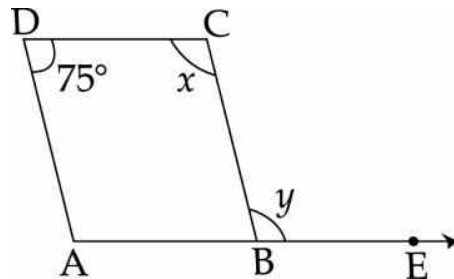
General Instructions :

- (i) All questions are **compulsory**
- (ii) The question paper consists of **31** questions divided into five **sections A, B, C, D** and **E. Section-A** comprises of **4** questions of **1 mark** each, **Section-B** comprises of **6** questions of **2 marks** each, **Section-C** comprises of **8** questions of **3 marks** each and **Section-D** comprises of **10** questions of **4 marks** each. **Section E** comprises of **two** questions of **3 marks** each and **1** question of **4 marks** from **Open Text** theme.
- (iii) There is no overall choice.
- (iv) Use of calculator is not permitted.

SECTION-A

Question numbers **1** to **4** carry **one** mark each.

1. ABCD is a parallelogram in which $\angle ADC = 75^\circ$ and side AB is produced to point E as shown in the figure. Find $(x + y)$. 1

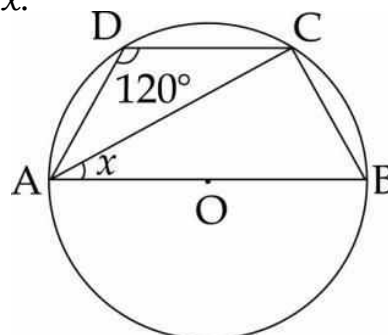


2. A semi circular sheet of paper of diameter 28 cm is bent into an open cup. Find the slant height of the cone. 1
3. If the mean of five observations $x, x + 2, x + 4, x + 6, x + 8$ is 11 find x . 1
4. Find the range of number of days in the month of February in leap year. 1

SECTION-B

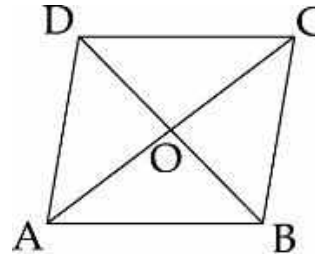
Question numbers **5** to **10** carry **two** marks each.

5. In the figure, O is the centre of a circle passing through points A, B, C and D and $\angle ADC = 120^\circ$. Find the value of x . 2



6. Construct an equilateral triangle of side 5 cm. 2

7. In the figure, the lengths of the diagonals AC and BD of rhombus ABCD are 16 cm and 12 cm respectively. Find the length of each side of the rhombus.



8. Find the volume of a cube whose lateral surface area is 196 m^2 . 2

9. To know the opinion of the students about the subject ENGLISH, a survey of 450 students was conducted. The data recorded is as follows : 2

Opinion	Number of students
Like	147
Dislike	203
Cannot comment	100

Find the probability that a student chosen at random :

(i) Cannot comment. (ii) Dislikes English.

10. In a store, bags of coal powder each contained the following weights of powder (in kg) : 7.97, 7.05, 7.08, 6.03, 7.00, 6.06, 6.08, 6.04, 6.00, 6.98, 7.15, 7.34, 7.23, 6.94, 7.12 kg. Find the probability that any of these bag chosen at random contains more than 7.1 kg of coal powder. 2

SECTION-C

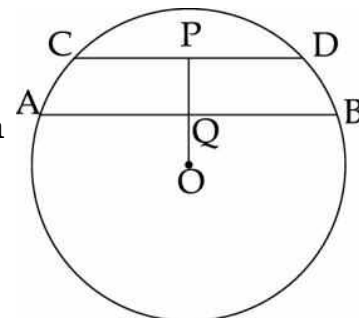
Question numbers **11** to **18** carry **three** marks each.

11. The average weight of A, B and C is 45 kg. If the average weight of A and B be 40 kg and that of B and C be 43 kg, find the weight of B. 3

12. In Mathematics test given to 20 students, the following marks (out of 100) are recorded : 3
75, 62, 88, 55, 90, 95, 85, 69, 78, 90, 95, 90, 95, 80, 71, 44, 57, 68, 90.
Find the mean, median and mode of this data.

13. ABCD is a parallelogram with diagonals AC and BD meeting each other at O. Prove that $\text{ar}(\Delta AOB) + \text{ar}(\Delta DOC) = \frac{1}{2} \text{ar}(\Delta ABCD)$ 3

14. In the figure, AB and CD are two chords of a circle with centre O such that $AB = 16 \text{ cm}$, $CD = 12 \text{ cm}$ and $AB \parallel CD$. If $OP \perp CD$ and if the distance between AB and O is 6 cm, find the radius of the circle and the distance of CD from centre O.

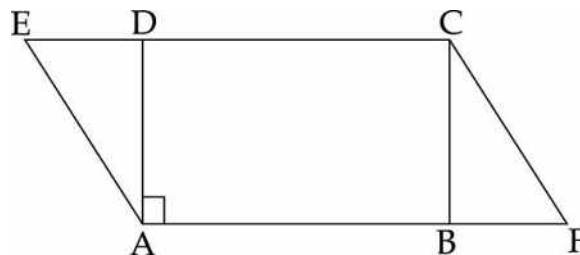


15. Construct an isosceles triangle whose perimeter is 12 cm and measure of each equal angle is 30° . Write steps of construction. 3
16. The angle between the two altitudes of a parallelogram through the vertex of an obtuse angle of the parallelogram is 70° . Find the angles of the parallelogram. 3
17. Construct an isosceles triangle whose base is of length 8 cm and corresponding altitude is of length 4 cm. Write steps of construction. 3
18. How many square metres of canvas is required for a conical tent, whose height is 3.5 m the radius of whose base is 12 m. 3

SECTION-D

Question numbers **19** to **28** carry **four** marks each.

19. A man spends Rs 18,000 monthly on an average for the first four months and Rs 20,000 monthly for the next eight months and saves Rs 56,000 in a year. Find his average monthly salary. 4
20. ABCD is a rectangle. Sides CD and AB are extended to E and F, such that $DE = BF$. Show that $\text{ar}(EDBA) = \text{ar}(DBFC)$. 4



21. The radius of the circumcircle of an equilateral triangle is 20 cm. Find the length of each side of the equilateral triangle. 4
22. Construct a ΔSTU , in which $\angle T = 150^\circ$, $TU = 3$ cm and $ST + US = 8$ cm. 4
23. Diagonal AC bisects $\angle A$ of a parallelogram ABCD. Show that : 4
 (i) It bisects $\angle C$ also. (ii) ABCD is a rhombus
24. On his birthday, Deepak bought 72 balloons to celebrate his birthday with the small children of his colony. If the total surface area of all balloons is 44352 cm^2 , what volume of methane gas will be used to fill all the balloons? Which value is depicted by Deepak? 4
25. The length, breadth and height of a room are 5 m, 4 m and 3 m respectively. Find the total cost of white washing the ceiling at the rate of Rs 12 per m^2 and four walls at the rate of Rs 10 per m^2 . 4

26. A heap of wheat is in the form of a cone whose diameter is 10.5 m and height is 3 m. Find its volume. If cost of 1 m³ wheat is Rs 10 then find total cost. Also find slant height of heap. 4

27. The volume of cylindrical pipe is 748cm³. Its length is 0.14m and its internal radius is 0.09 m. Find thickness of pipe. 4

28. Over the past 150 working days, the number of defective parts produced by a machine is given in the following table : 4

Number of defective parts	0	1	2	3	4	5	6
Days	50	32	22	18	12	12	4

Determine the probability that output has :

- (i) no defective part. (ii) at least one defective part.
 (iii) not more than 5 defective parts (iv) less than 3 defective parts.

SECTION-E (Open Text)

(* Please ensure that open text of the given theme is supplied with this question paper.)

Theme : Childhood Obesity in India

29. Taking the height as 200 cm, form a linear equation in two variables taking BMI as x and weight as y kg. Draw its graph also. 3

30. Supriya eats 2 slices of pizza and then comes across its calorie value. She refers to the table in which the calorie value for junk food items has been mentioned. She wonders that she has to cycle for three hours to burn down her calories. She decided to cycle for x minutes and dance for y minutes to burn these calories. Write a linear equation for the same. 3

31. It is stated that : 4
 "Children from age one onwards grows taller and heavier till they reach adolescence at a whopping rate of about 2 kg every year for weight and 3 inches for height. Assuming weight as variable 'w' and height as 'h', and 'a' as age in years, if weight at age 1 is 7 kg and height is 27 inch, establish a linear relationship between following :
 (a) a and w (b) a and h

SINDHI HIGH SCHOOL, HEBBAL
SUMMATIVE ASSESSEMENT – II (2015-16)
SUBJECT:- SCIENCE

CLASS:- IX
DATE:- 16.03.2016

MARKS:- 90
TIME :- 1hr
No. of sides:- 04

General Instructions :

- (i) The question paper comprises of **three Sections, A, B and C**. You are to attempt all the sections.
- (ii) **All** questions are **compulsory**.
- (iii) **All** questions of **Section-A, Section-B and Section-C** are to be attempted separately.
- (iv) Question numbers **1 to 3** in **Section-A** are **one mark** questions. These are to be answered in **one word** or in **one sentence**.
- (v) Question numbers **4 and 5** in **Section-A** are **two marks** questions. These are to be answered in about **30 words** each.
- (vi) Question numbers **6 to 16** in **Section-A** are **three marks** questions. These are to be answered in about **50 words** each.
- (vii) Question numbers **17 to 21** in **Section-A** are **five marks** questions. These are to be answered in about **70 words** each.
- (viii) Section B has **3 OTBA** questions. Question number **22** is **two marks**, Question number **23** is **three marks** and Question number **24** is **five marks** question.
- (ix) Question numbers **25 to 33** in **Section-C** are multiple choice questions based on practical skills. Each question is a **one mark** question. You are to select one most appropriate response out of the four provided to you.
- (x) Question numbers **34 to 36** in section C are **two marks** questions based on practical skills. These are to be answered in about **30 words** each.

=====

SECTION-A

1. "Relative atomic mass of sulphur is 32u". What do you understand from the statement ? 1
2. Identify the most stable atom from the following. Also give a reason for your answer. Na_{11}^{23} , Cl_{17}^{35} , Al_{13}^{27} , Ar_{18}^{40} 1
3. State what happens in the body during inflammation. 1
4. Find the time period of a wave whose frequency is 500 Hz. If the wavelength is 0.7 m find the velocity of the wave. 1
5. Write the commercial unit of electrical energy. Derive the relation between the commercial unit of energy and joules. What is meant by the statement that the wattage of an electric iron is 1000 W. 1
6. A compound XH is formed by combination of an element 'X' with hydrogen. Find the valency of element 'X'. State the formula of the compounds formed by combination of : (a) X with nitrogen (b) X with oxygen 2
7. An element X_{13}^{27} exists in nature as metal. 3

- (a) Write the number of protons and neutrons present in it.
 (b) What is its valency ?
 (c) Write the chemical formula of a compound formed when "X" reacts with chlorine.
8. Classify the following into isotopes and isobars. State reason for their similar chemical properties in case of all the isotopes of one element. 3
 Argon, Protium, Deuterium, Tritium, Calcium.
9. (a) Assign appropriate class or phylum to each of the following : 3
 star fish, dog fish and jelly fish
 (b) Name one more organism belonging to each of the above groups assigned.
10. What is a disease ? How many types of diseases have you studied ? Give any two examples. 3
11. Give any two differences between angiosperms and gymnosperms giving one example of each. 3
12. Define relative density. The density of water is 10^3kg/m^3 . Relative density of iron is 7.8. What is the density of iron in S.I. unit ? 3
13. A person when he standing between two vertical cliffs such that he was 640 m away from the nearest cliff when he shouted, he heard the first echo after 4seconds and the second echo 3 seconds later. Calculate 3
 (a) the velocity of sound in air, and (b) the distance between the cliffs
14. A ball is dropped from a height of 20 m. If the mass of the ball is 2 Kg, calculate the (i) speed, (ii) Kinetic energy of the ball just before it reaches the ground. 3
- 15.(a) State Archimedes' principle. Give its two applications ? 3
 (b) When an object is immersed in the fluid, name the two forces acting on it ?
16. Harsha was watching a programme based on ships on television. She saw a device attached to a ship through which the man on the ship located the enemy submarines and sent the message to the headquarters. 3
 (a) Name the device fitted in the ship.
 (b) On which principle does the device work ?
 (c) What values are shown by Harsha ?
17. (a) Write any two points of difference between an atom and an ion. 5
 (b) The ratio by mass for calcium and oxygen in Calcium oxide is given as 5 : 2. Calculate the ratio by number of atoms for calcium oxide (Atomic mass of Ca= 40u, O = 16u).Write Chemical formula of Calcium oxide.
18. In the hierarchy of classification, there are different groups. Out of the groups mentioned below answer the following questions : 5
 Sub -groups : Genus, Order, Division, Class, Family.
 (a) Name the group that has maximum number of organisms.
 (b) Name the group that has maximum number of common characters.

- (c) Division : Plants : : _____ : Animals
 (d) Which group form is part of the scientific name ?
 (e) Arrange the above sub groups from highest to lowest levels in hierarchy.
19. (a) What are vectors ? 5
 (b) In many species of mosquitoes the males do not feed on human blood, but females do. State why ?
 (c) What precautions could you take in your locality or society to reduce the incidences of infectious diseases ?
20. (a) State the meaning of 1 Pascal. 5
 (b) A boy of mass 40 kg is standing on loose sand. If the area of his feet is 0.04 m^2 , calculate the pressure exerted by the boy on sand. ($g = 10 \text{ ms}^{-2}$)
 (c) Why are bases of dam kept broader
21. (a) Define work. Give SI unit of work. Write an expression for positive work done. 5
 (b) Calculate the work done in pushing a cart through a distance of 50 m against the force of friction equal to 250 N. Also state the type of work done.
 (c) Sarita lives on 3rd floor of building at the height of 15 m. She carries her school bag weighting 5.2 kg from the ground floor to her house. Find the amount of work done by her and identity the force against which she has done work. ($g=10 \text{ ms}^{-2}$)

SECTION – B (OTBA)

(* Please ensure that open text of the given theme is supplied with this question paper.) **Handling Drought in our Country**

22. How does drought help in extinction of species? 2
23. What human activities are responsible for drought?
 (Write in brief any three) 3
24. Describe the current problems being faced in water management? State measures to effectively utilise accessible surface and ground water in drought inclined areas. 5

Section – C

25. The wave property of sound which does not affect the hearing process is: 1
 (a) Intensity (b) Loudness (c) Velocity of sound (d) Amplitude
26. A student has to perform the experiment, for comparing the pressure of the given cuboid placed at different faces. The steps given below are not in correct sequence : 1
 (i) To place the cuboid slowly on the sand and note the reading.
 (ii) To calculate the least count of spring balance.
 (iii) To measure the zero error in the spring balance.
 (iv) To measure the weight of the given cuboid.

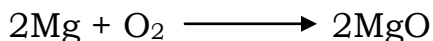
The correct sequence of steps will be :

- (a) (i), (iii), (iv), (ii) (b) (ii), (iii), (i), (iv)
(c) (iii) (ii), (iv), (i) (d) (iii), (iv), (i), (ii)

27. A longitudinal pulse is produced in a slinky. The frequency of the pulse is 120 Hz and it travels at a speed of 60 cm/s. The separation between consecutive compression is :

- (a) 90 cm (b) 0.5 cm (c) 2 cm (d) 1.25 cm

28. Given below is a chemical equation :

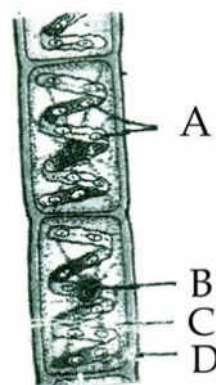


Mass of magnesium oxide formed by burning 24g of magnesium in air is :- (Relative atomic masses, Mg=24u and O=16u) :

- (a) 16g (b) 80g (c) 20g (d) 40g

29. The correct labelling of parts A,B, C and D is :

- (a) (A)-cytoplasm (B)- Chloroplast
(C)- Nucleus (D)- Cell wall
(b) (A) - Chloroplast (B) - Nucleus
(C) - cytoplasm (D)-Cell wall
(c) (A) - Cell wall (B) - Cytoplasm
(C) - Nucleus (D) - Chloroplast
(d) (A) - Chloroplast (B) - Cytoplasm
(C) - Nucleus (D) - Cell wall



30. A student noted down the following precautions for the experiment "To verify the law of conservation of mass in a chemical reaction"

- (i) weighing should be done carefully.
(ii) flask should be corked tightly.
(iii) solutions should not get mixed before the reaction.
(iv) mixing of two solutions must be done quickly

The precaution which needs to be corrected is :

- (a) (i) (b) (ii) (c) (iii) (d) (iv)

31. In monocotyledonous plants flowers have petals that are :

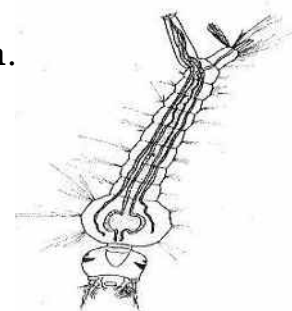
- (a) four in number (b) five in number
(c) two in number (d) three or multiples of three in number

32. Which is a correct statement :

- (a) plants with reticulate venation have a fibrous root system.
(b) plants with parallel venation have fibrous root system.
(c) plants with parallel venation have tap root system.
(d) plants with reticulate venation do not have a true root system.

33. Observe the diagram given above and identify the stage of life cycle of mosquito :

- (a) pupa (b) larva



(c) egg

(d) adult

34. If mass of a body is increased by two times, what will be the effect on its density and why ? 2
35. A student immersed a solid body completely in different fluids filled in four test tubes with salt water, tap water, alcohol and milk respectively. In which fluid there will be maximum loss in weight ? Explain with suitable reason. 2
36. Name any two aerial adaptations in birds. 2

SINDHI HIGH SCHOOL, HEBBAL
SUMMATIVE ASSESSEMENT – II (2015-16)
SUBJECT:- SOCIAL SCIENCE

CLASS:- IX
DATE:- 18.03.2016

MARKS:- 90
TIME :- 3hr
No. of sides:- 04

General Instructions :

- (i) The question paper has **two sections (Section A and Section B)** with **30** questions in all. All questions are **compulsory**.
- (ii) Marks are indicated against each question.
- (iii) Questions from serial number **1** to **8** are very short answer type questions. Each question carries **one mark**.
- (iv) Questions from serial number **9** to **20** are **3 marks** questions. Answer of these questions should not exceed **80 words** each.
- (v) Questions from serial number **21** to **26** are **5 marks** questions. Answer of these questions should not exceed **120 words** each.
- (vi) Question number **27** and **28** are map question of **3 marks** each, from History and Geography respectively. After completion, attach the maps inside your answer book.
- (vii) Question number **29** and **30** are from **Open Text themes** and each question is of **5** marks.

=====

SECTION - A

- | | |
|--|---|
| 1.1 Name two pastoral communities from the dry plateau of India. | 1 |
| OR | |
| 1.2 What were 'Criminal tribes' forced to do by the British ? | 1 |
| OR | |
| 1.3 Name any two crops produced in India during colonial period for the world market. | 1 |
| 2. What is the windward side of the mountain. | 1 |
| 3. Who are the major decision makers in our country. | 1 |
| 4. How is India a secular state ? | 1 |
| 5. Give one difference between a By-Election and General Election. | 1 |
| 6. Which international organisation uses a uniform standard to measure the poverty line in developing countries ? | 1 |
| 7. How much minimum calorie is required in rural and urban areas to come up poverty line ? | 1 |
| 8. Who are the poorest of the poor in the Indian Society ? | 1 |
| 9.1 Explain any three different livelihood practices adopted by the pastoralist in the 20th century, as they left their traditional occupations. | 3 |

OR

- 9.2 Analyse the impact of World Wars on the forests. 3
OR
- 9.3 What was the impact of opium trade in China in mid eighteenth century ? 3
- 10.1 Why didn't the popularity of cricket go beyond the colonies ? Give any three reasons. 3
OR
- 10.2 Describe the case of defiance of „shoe respect“ in Surat. 3
- 11.1 What major change did Packer introduce to cricket ? How were the cricket organizations benefitted by it ? 3
OR
- 11.2 Describe the 'Sumptuary Laws'. 3
12. Give an account of the biodiversity of India. 3
13. Distinguish between internal migration and international migration. How do they affect population change ? Explain. 3
14. What is Kiang ? Where is it found in India ? Name any two other animals found with Kiang. 3
15. "It is the language, culture and religion of minorities that needs special protection". What provisions have been made by the Indian Constitution for the protection of these for the minorities ? 3
16. Mention any three main powers of the President of India. 3
17. What is the purpose to issue Election Photo Identity Card (EPIC) to the voters ? 3
18. Suggest any three ways to reduce poverty in India. 3
19. Write any three effects of irregular income. 3
20. Explain the two planks on which the current anti-poverty strategy of the government is based. 3
21. 1 Describe any five problems faced by the Maasais when they were confined to special reserves. 5
OR
- 21.2 Describe the effects of World Wars on forests with reference to the “scorched earth policy”. 5
OR
- 21.3 How did it happen that the American dream of a land of plenty had turned into a nightmare ? What lesson did it teach the settlers ? 5
- 22.1 `Innovations in cricket technique in recent years have mainly come from the practice of subcontinental teams in countries like India, Pakistan

and Sri Lanka.' Explain the statement with examples. 5

OR

22.2 Describe the women's dress reform movement in America. 5

23. Is cold weather season same all over India? Give any five examples in support of your answer. 5

24. "There is a change in the variety of fauna with the corresponding change in the flora". Justify the given statement with examples from Indian natural vegetation. 5

25. 'State has to be neutral and impartial in dealing with all religions.' Explain the characteristic features of the state that is being highlighted through this statement. 5

26. Why slogans are used by political party ? Mention any four successful slogans given by different political parties in various elections. 5

The student has to attempt any one map question from question numbers 27b. Question no. 28 is compulsory. The maps are attached with the question paper.

27. Two items A and B are shown in the given political outline map of India.

Identify these items with the help of following information and write their correct names on the lines marked on the map.

(A) Area : where Siddu Kanu started revolt against Britishers.

(B) Region to which did Alluri Sitaram Raju belonge.

On the same political outline map of India, locate and label the following item with appropriate symbol.

(C) Place where first Imperial Forest Research Institute was established.

[P.T.O]

25. 'State has to be neutral and impartial in dealing with all religions.' Explain the characteristic features of the state that is being highlighted through this statement. 5

26. Why slogans are used by political party ? Mention any four successful slogans given by different political parties in various elections. 5

The student has to attempt any one map question from question numbers 27b. Question no. 28 is compulsory. The maps are attached with the question paper.

27. Two items A and B are shown in the given political outline map of India. Identify these items with the help of following information and write their correct names on the lines marked on the map.

(A) Area : where Siddu Kanu started revolt against Britishers.

(B) Region to which did Alluri Sitaram Raju belonge.

On the same political outline map of India, locate and label the following item with appropriate symbol.

(C) Place where first Imperial Forest Research Institute was established.

[P.T.O]

28. (a) Two features (A) and (B) are shown in the political outline map of India. Identify these features with the help of the following information and write their correct names on the lines marked on the map.

(A) A meteorological station.

(B) A National Park.

(b) On the same political outline map of India locate and label the following feature with appropriate symbol.

(C) The stat having lowest density of population

SECTION - B (OTBA)

(* Please ensure that open text of the given theme is supplied with this question paper) **Theme : Together We Rise**

29. Describe the contribution of the Polson company to bring the Milk Revolution in India. 5

30. "Co-operatives not only contribute toward socio-economic upliftment of rural areas but are very active in urban sector as well". Examine the statement. 5

28. (a) Two features (A) and (B) are shown in the political outline map of India. Identify these features with the help of the following information and write

their correct names on the lines marked on the map.

(A) A meteorological station.

(B) A National Park.

(b) On the same political outline map of India locate and label the following feature with appropriate symbol.

(C) The state having lowest density of population

SECTION - B (OTBA)

(* Please ensure that open text of the given theme is supplied with this question paper) Theme : Together We Rise

29. Describe the contribution of the Polson company to bring the Milk Revolution in India.

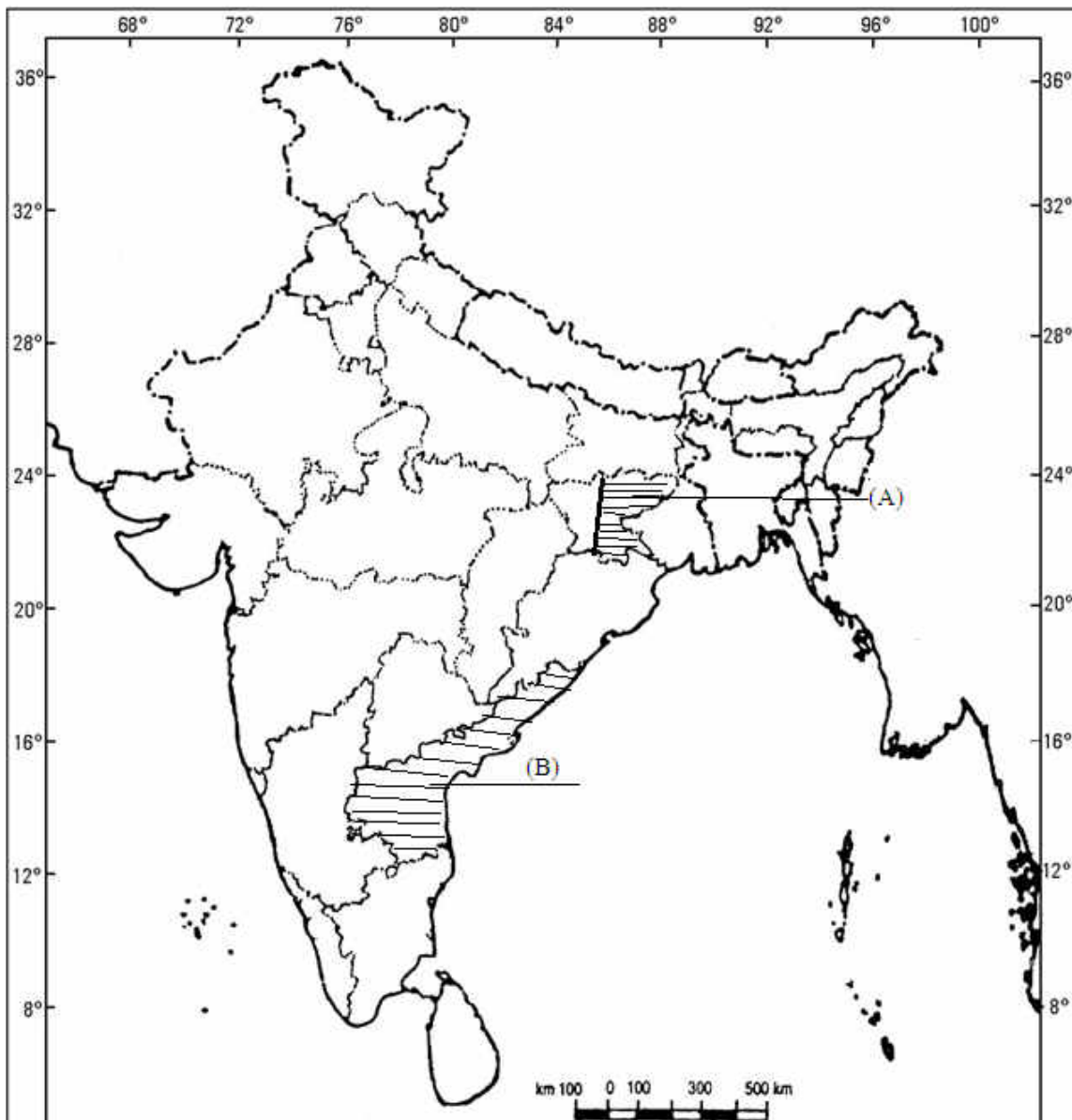
5

30. "Co-operatives not only contribute toward socio-economic upliftment of rural areas but are very active in urban sector as well". Examine the statement.

5

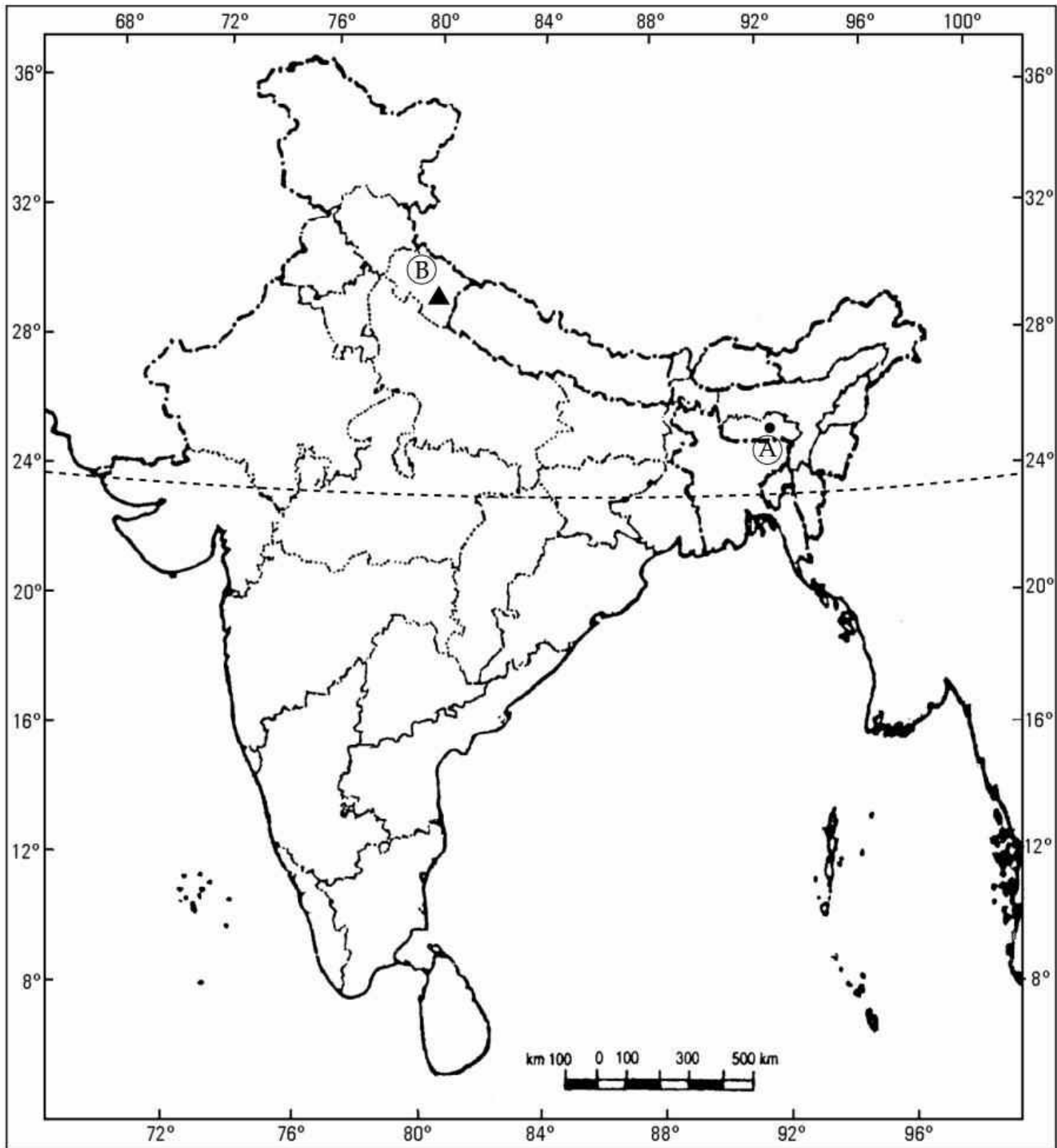
27

Political Map of India



28.

Political Map of India



SUMMATIVE ASSESSMENT - II (2015-2016)
ENGLISH COMMUNICATIVE
Class - IX

Time: 3 hours

Maximum Marks: 70

Instructions:

The question paper is divided into three sections.

Section A	:	Reading & OTBA	20 marks
Section B	:	Writing and Grammar	25 marks
Section C	:	Literature	25 marks

SECTION A (READING & OTBA: 20 Marks)

1a Read the following passage.

5

ENTERTAINMENT AND FILMS

The film industry is facing the challenge of the television screen which, because of its ready availability and nearness to entertainment seekers, is becoming very popular, particularly in the West where television programmes are as indispensable to people as newspaper material. The motion picture has also stepped into the international sphere as an agent of goodwill and cooperation among nations. Cultural contacts which tend to reduce tension in the world and bring harmony in international relations have been established through the medium of films. In the spheres of human conduct and behavior, movies are an inexhaustible source of inventiveness. All our new fashions in respect of the clothes we wear, the cut of our hair, the shape of our footwear, interior decoration of our rooms, and even our manners and habits of social gatherings owe their origin to the cinema industry where they first appear with the glamour of their novelty and the appeal of their sensuous attractiveness. The science of makeup which is the mother of all new fashions in the the cinema industry without which it would lose half of its glamour.

Tailors, photographers, shoemakers and thousand other varieties of luxury goods, interior decorators and a host of other men in different trades look to this industry for guidance and inspiration, for it provides new and wonderful ideas which enrich their professional knowledge and help them meet their customer' demand for newness.

On the basis of your reading of the above passage, answer the following questions :

- (1) The television is a danger to film industry as :
- (2) The film industry influences our _____.
- (3) On the international sphere, the film industry _____.
- (4) _____ look for guidance to films for professional growth in their field.
- (5) 'Extravagance' is a synonym for _____.

1b Read the following passage carefully.

5

Millind was totally heartbroken at the loss of his pet rabbit, 'Bunno'. Millind was planning to go back to his bedroom to brood when Sudhi came over. Millind always shared his joys and sorrows with Sudhi. This time too he shared his sorrows with Sudhi. One night Sudhi lay in her bed wondering how she could mend Millind's heart. Their family dog, Syeli, kept

disturbing her thoughts with her whining and her crisp, short barks. Sudhi didn't quite know when she fell off to sleep.

When she woke up, she saw her Mom next to her, smiling. "Syeli has given birth to a golden-brown pup, Sudhi," Mom said. Sudhi jumped out of bed. Was this the solution to Millind's misery? And then Sudhi had another thought: Only one pup? And she would have to give it away? For one long moment there was a silent struggle inside her. But soon her mind was made up. "We could make Millind happy with the pup, Mom" she said. One morning, when Millind was in his garden, Sudhi stealthily stepped in through his garden gate. She set the puppy down. Millind wheeled around suddenly and the puppy dashed up to him. A small fear crept into Sudhi's heart, 'will he reject the pup?' "Do you like him Millind?" she asked. "I love him", Millind said. Sudhi knew that she had succeeded in doing a bit of mending.

- (1) On the basis of your reading of passage, complete the following statements.
 - (a) Sudhi wanted to 'mend' Millind's heart because _____.
 - (b) Syeli kept disturbing Sudhi's thought _____
- (2) Answer the following questions.
 - (a) What was the silent struggle inside Sudhi's mind?
 - (b) How did Sudhi make Millind happy?
- (3) Find a word from the passage which means the same as 'silently'.

(Open Text: 10 Marks)

(* Please ensure that open text of the given theme is supplied with this question paper)
Theme: Let's Welcome, Accept and Respect

a 'Folklores are a rich source of tradition and culture.' Comment. 5

b Name the eight North Eastern (seven sisters and one brother) states of India. How do they mark their presence on the map of the country? 5

SECTION B (WRITING & GRAMMAR: 25 Marks)

Write an article in about 100-120 words on the influence of television on the children of today. 5
Mention about the kind of programmes that are popular amongst them, taking ideas from the MCB unit 'Children' on the same.

On the basis of the clipping shown below, write a short story in 150-200 words. Give it a suitable title. 10

Little Edward is a prodigy and shares a very special bond with his teacher Mr.Henderson.....



5 Choose the most appropriate options from the ones given below to complete the following paragraph. 3

Cyclists, pedestrians and motorists make different demands (a) _____ road design which may lead to conflicts. Some jurisdictions give priority (b) _____ motorized traffic, for example setting up one-way street systems, free-right turns, high capacity roundabouts, and slip roads. Others may apply traffic restraint measures to limit the impact (c) _____ motorized transport.

- | | | | | | | | | |
|-----|-----|-----|------|----|-------|----|------|------|
| (a) | (i) | for | (ii) | on | (iii) | at | (iv) | of |
| (b) | (i) | for | (ii) | of | (iii) | to | (iv) | on |
| (c) | (i) | to | (ii) | on | (iii) | of | (iv) | over |

6 In the following passage one word has been omitted in each line. Write the missing word along with the words before and after against the correct blank number. 4

	Before	Missing Word	After
In the U.S., drivers polite	(a)	_____	_____
They drive slowly and allow lot of space	(b)	_____	_____
between vehicles. A pedestrian respected	(c)	_____	_____
most amongst road users in California.	(d)	_____	_____

7 Look at the words/phrases given below and rearrange to form meaningful sentences. 3

- a. children's Day / marked / year / this / events / exciting / were/ celebrations / by
- b. spent / moments / the President / memorable / some / children / with / the
- c. distributed/he/them/To/sweets/also

SECTION C (LITERATURE: 25 Marks)

Read one of the extracts given below and briefly answer the questions that follow:

8 'Really, I must protest against this abominably unscientific and unhygienic method of peeling

potatoes'.

- (a) Who is being addressed in the above line ?
- (b) Why was 'I' addressing them ?
- (c) What is meant by the word, 'abominably' ?

OR

Humph! I'll risk it. (Bishop, going to door R). But mind! Play me false and as sure as there are devils in hell, I'll drive my knife through your heart. I have nothing to lose' 3

- (a) Who is the speaker of these lines ?
- (b) Why does the speaker say, "I have nothing to lose" ?
- (c) What is the antonym of 'lose' ?

Answer the following questions in 30 to 40 words each: (2+2+2+2)

- 9a Why does the convict refer to the prison ship as hell ? 2
- 9b 'I quench the thirst of one, I cure the ailment of the other'. Whose ailment is cured by the rain and how ? 2
- 9c What was the initial reaction of Miss Allyn when she was stopped by John ? 2
- 9d What does the expression, 'feet of the mad elements' refer to ? 2

Answer one of the following questions in 80-100 words

- 10 The poetess Pam Ayres 'had a sweet tooth' which led to severe dental problems. Comment. 4

OR

Being knowledgeable is a virtue but having an overestimation of self-knowledge is a folly. 4
Justify this statement with reference to 'The Man Who Knew Too Much'.

Answer one of the following questions in 150-200 words

- 11 Gulliver was left alone with four days' provision. What did he do for his survival ? 10

OR

Gulliver has the honour to "lick the dust before his [the King's] footstool". How does it reflect on the character of the King of Lugganag ? 10

OR

"We are slaves of our stomachs". Why does the narrator say so ? 10

OR

Give a pen picture of George.

10

-o0o0o0o-